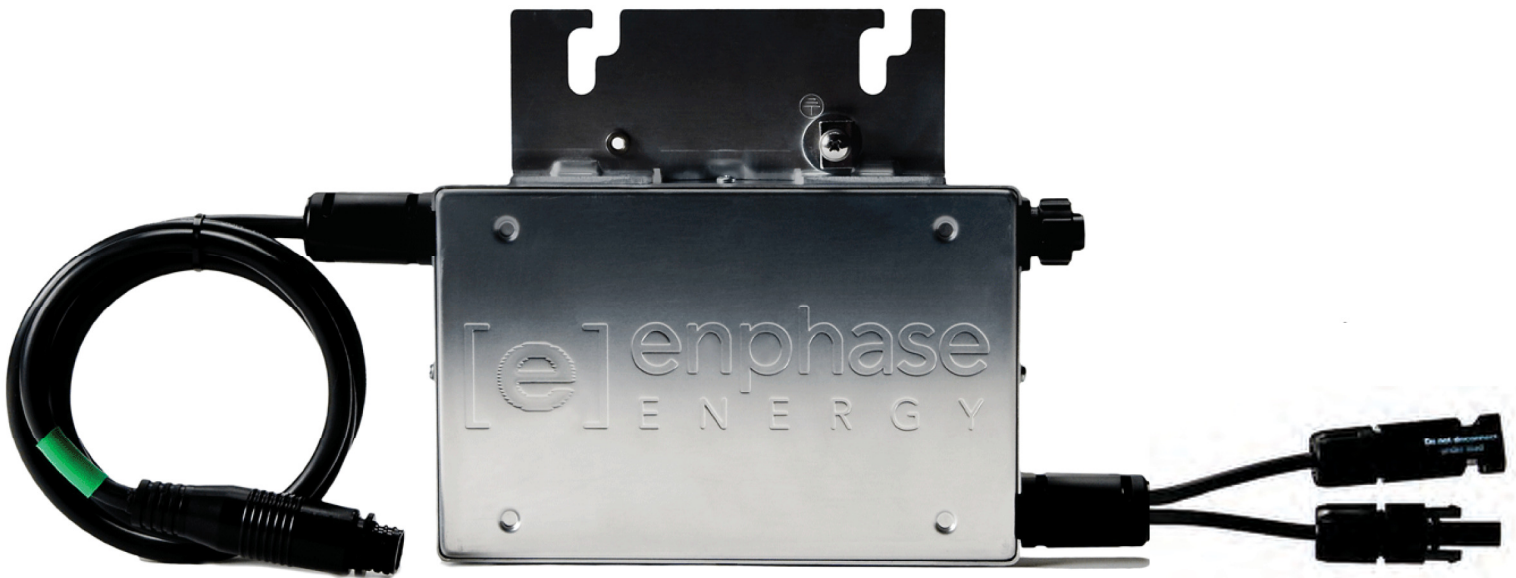




ENPHASE MICROINVERTER

M210



The Enphase Energy Microinverter System improves energy harvest, increases reliability, and dramatically simplifies design, installation and management of solar power systems. The Enphase System includes the microinverter, the Envoy Communications Gateway, and the web-based Enlighten monitoring and analysis website.

- PRODUCTIVE** [- Maximum energy production
- Resilient to dust, debris and shading
- Performance monitoring per module
- RELIABLE** [- System availability greater than 99.8%
- No single point of system failure
- SMART** [- Quick & simple design, installation and management
- 24/7 monitoring and analysis
- SAFE** [- Low voltage DC
- Reduced fire risk



MICROINVERTER TECHNICAL DATA

Input Data (DC)		
	M210-84-208-S12	M210-84-240-S12
Recommended input power (STC)	240W	240W
Maximum input DC voltage	62V	62V
Peak power tracking voltage	31V – 50V	31V – 50V
Min./Max. start voltage	38V/62V	38V/62V
Max. DC short circuit current	12A	12A
Max. input current	10A	10A
Output Data (AC)		
Maximum output power	210W	210W
Nominal output current	1.00 A	.88 A
Nominal voltage/range	208V/183V-229V	240V/211V-264V
Extended voltage/range	208V/179V-232V	240V/206V-269V
Nominal frequency/range	60.0/59.3-60.5	60.0/59.3-60.5
Extended frequency/range	60.0/59.2-60.6	60.0/59.2-60.6
Power factor	>0.95	>0.95
Maximum units per branch	18	13
Efficiency		
Peak inverter efficiency	96.0%	96.0%
CEC weighted efficiency	95.5%	95.5%
Nominal MPP tracking	99.6%	99.6%
Mechanical Data		
Operating temperature range	-40°C to +65°C	-40°C to +65°C
Night time power consumption	30mW	30mW
Dimensions (WxHxD)	8" x 5.25" x 1.25"	
Weight	4.4 lbs	
Cooling	Natural Convection – No Fans	
Enclosure environmental rating	Outdoor – NEMA 6	
Features		
Communication	Powerline	
Warranty	15 Years	
Compliance	UL1741/IEEE1547 FCC Part 15 Class B	

Enphase Energy, Inc.

201 1st Street, Suite 300, Petaluma, CA 94952
877 797 4743 enphaseenergy.com

142-00006 REV 04